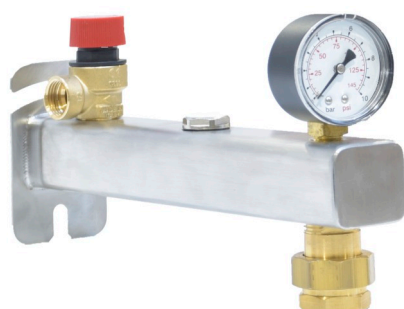
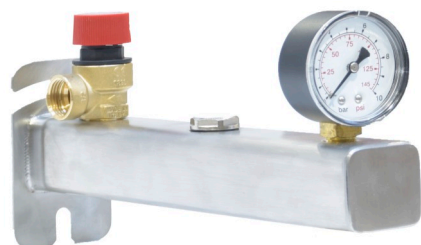


Safety group INOX for domestic hot water 6 bar

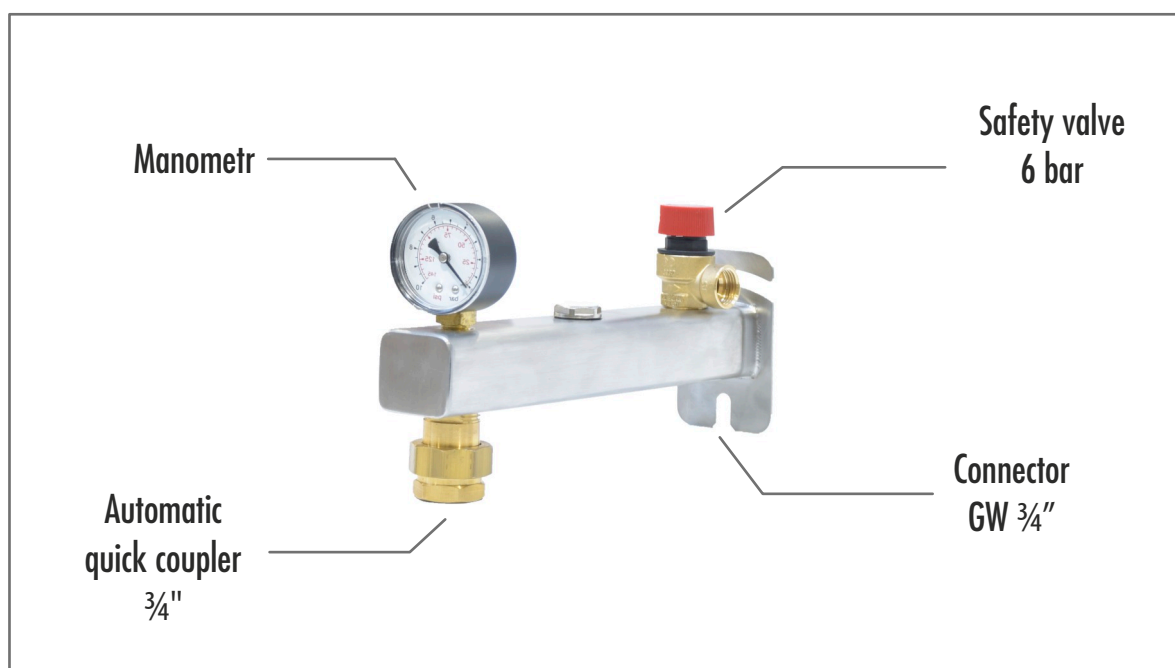


Safety group DHW is an important element of the hot water installation, whose main task is to protect the installation against the increase in pressure caused by the increase in water temperature in the system. It is intended for installation in home heating systems. The beam is equipped with a 6 bar safety valve, a pressure gauge and a set of mounting pins. Additionally, in the lower part of the beam there are connections for the expansion vessel and the power supply from the safety beam.

Technical data:

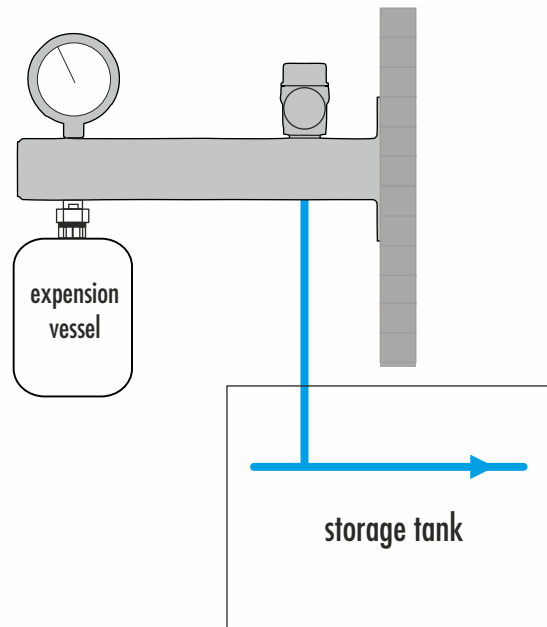
Material:	stainless steel
Maximum operating temperature:	95°C
Max. working pressure:	8 bar
Safety valve opening pressure:	6 bar
Vessel connection:	3/4" GW
Installation connection:	3/4"
Medium:	water/glycol

Type	Catalog number
Safety group INOX for domestic hot water, 6 bar, with equipment	200625
Safety group INOX for domestic hot water, 6 bar, with equipment, with automatic quick coupler 3/4"	200626



Application example

Safety group



Simplified schematic diagram
installation - not checked
standard
installation elements such as
also the diagram
boiler room security

Dimensional diagram

