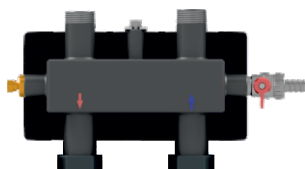


## Single-circuit hydraulic separator XPN MINI - DN 25

The XPN MINI - DN 25 hydraulic separator is made of steel. It is factory-equipped with insulation, two connections for a temperature sensor and a drain valve (1/2" sleeve). The set includes a plunger sleeve for connecting a 1/2" temperature sensor and a wall bracket.

Possibility of installation horizontally

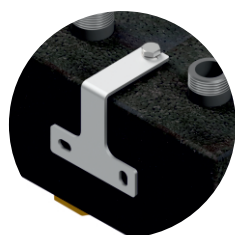


### Technical data:

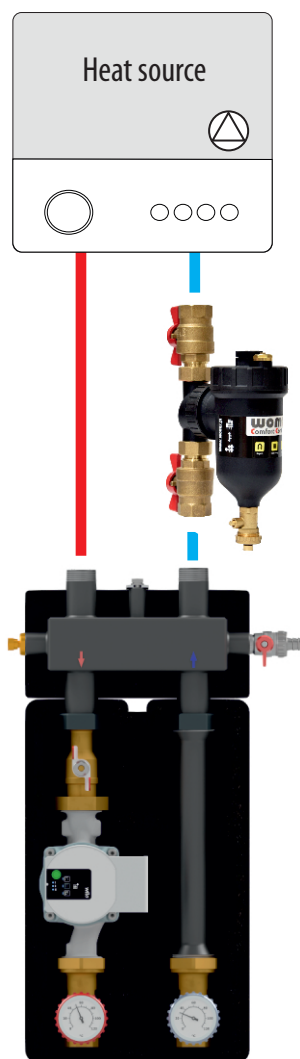
|                      |                       |
|----------------------|-----------------------|
| Material:            | steel                 |
| Maximum pressure:    | 6 bar                 |
| Maximum flow:        | 1.5 m <sup>3</sup> /h |
| Maximum temperature: | 110°C                 |
| Insulation:          | EPP black             |
| Connection:          | 1" GZ                 |

| Type  | Flow [m <sup>3</sup> /h] | Volume [l] | Catalog number |
|---|--------------------------|------------|----------------|
| Single-circuit hydraulic separator XPN MINI - DN 25 | 1,5                      | 0,7        | 611055         |

Mounting bracket included



Connection diagram

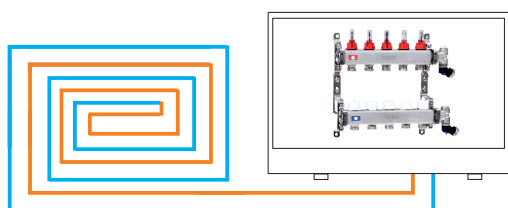


magnetic separator  
SM 25

Set  
H1

*Simplified schematic diagram of the installation - standard installation elements as well as the boiler room protection diagram were not marked.*

underfloor heating circuit



Brass manifold  
CM-NTRot



### Set H1 - single-circuit set without mixing valve



| Type  | Catalog number |
|---|----------------|
| Set H1 with pump <b>Wilo Yonos Para 25/6</b>      | 656051         |
| Set H1 with pump <b>Grundfos UPM3S Auto 25-60</b> | 656059         |
| Set H1 with pump <b>DAB Evosta2 65/180</b>        | 656053         |

The set includes:

1. Single-circuit hydraulic separator XPN MINI - DN 25 with a bracket,
2. Group SA 125 - DN 25 with a pump (see table).

### Set H2 - single-circuit set with rotary mixing valve and electric actuator



| Type  | Catalog number |
|---|----------------|
| Set H2 with pump <b>Wilo Yonos Para 25/6</b>      | 656081         |
| Set H2 with pump <b>Grundfos UPM3S Auto 25-60</b> | 656082         |
| Set H2 with pump <b>DAB Evosta2 65/180</b>        | 656083         |

The set includes:

1. Single-circuit hydraulic separator XPN MINI - DN 25 with a bracket,
2. Group SMT 125 - DN 25 with a pump (see table),
3. Actuator SL 10 - 230 / 120 with adapter no. A 101.

### Set H3 - single-circuit set with thermostatic mixing valve with regulation 20-45 °C

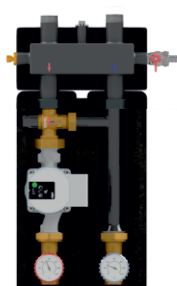


| Type  | Catalog number |
|---|----------------|
| Set H3 with pump <b>Wilo Yonos Para 25/6</b>      | 656071         |
| Set H3 with pump <b>Grundfos UPM3S Auto 25-60</b> | 656072         |
| Set H3 with pump <b>DAB Evosta2 65/180</b>        | 656073         |

The set includes:

1. Single-circuit hydraulic separator XPN MINI - DN 25 with a bracket,
2. Group SMT1 125 - DN 25 with a pump (see table).

### Set H4 - single-circuit set with thermostatic mixing valve with regulation 35-60 °C



| Nazwa asortymentu                                 | Nr katalogowy |
|---|---------------|
| Set H4 with pump <b>Wilo Yonos Para 25/6</b>      | 656091        |
| Set H4 with pump <b>Grundfos UPM3S Auto 25-60</b> | 656092        |
| Set H4 with pump <b>DAB Evosta2 65/180</b>        | 656093        |

The set includes:

1. Single-circuit hydraulic separator XPN MINI - DN 25 with a bracket,
2. Group SMT1 125 - DN 25 with a pump (see table).

## Dimensional diagram

