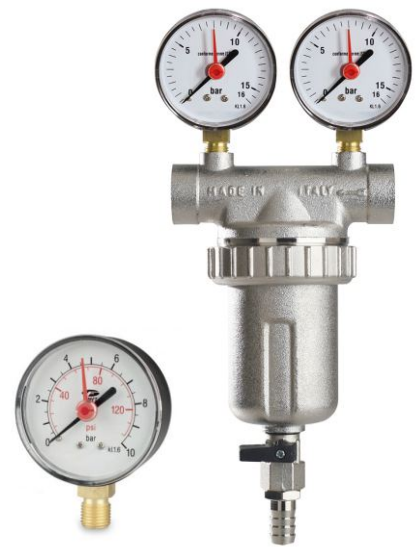


Self-cleaning filters FSV

The self-cleaning filter is suitable for all plants, both civil and industrial ones, where the constant impurities in water could damage or block the present appliances. The water, we usually use, comes from waterworks or wells, contains a great number of particles which, according to their sizes, interact negatively with the installed accessories and compromise, therefore, their correct functioning.

The joints for the connection to the hydraulic plant are internal threaded in compliance with the ISO 228/1 standard. On the body of the self-cleaning filter there are two 1/4" G threads for the connection of two pressure gauges. The self-cleaning filter is equipped with 400 micron filtering cartridge.



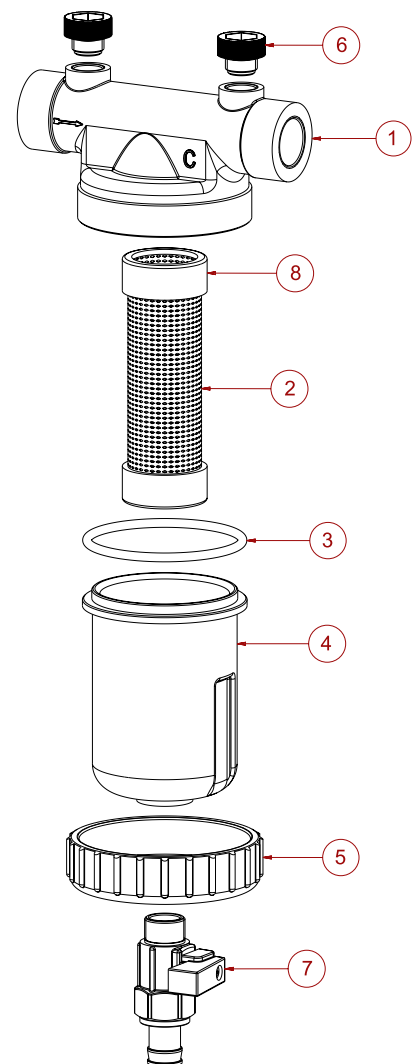
Technical data:

Maximum recommended working pressure: **16 bar**

Maximum recommended working temperature: **80°C**

Available sizes: **GW 1/2" - 3/4" - 1" - 1 1/4" - 1 1/2" - 2"**

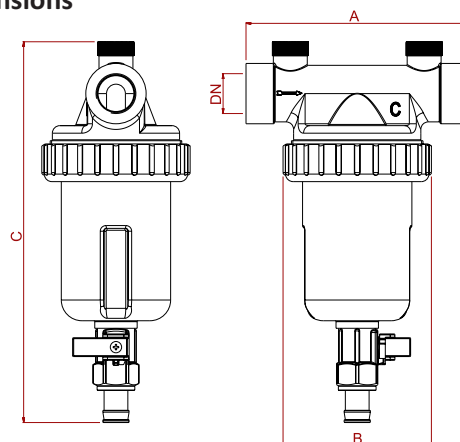
Filter cartridge: **400 micron (0,4 mm)**



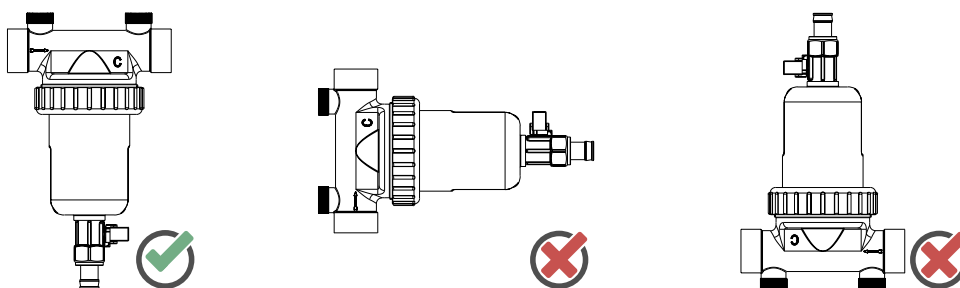
Nr	Description	Material
1	Body	brass
2	Filtering cartridge	stainless steel
3	O-Ring	EPDM
4	Cup	brass
5	Lock ring	brass
6	Plug 1/4" + O-ring	NYLON + EPDM
7	Clean valve	Mosiądz
8	Gasket	PVC

Type	Catalog number	DN - Ø	A	B	C
FSV 12F - GW 1/2"	601650	DN 15 - 1/2"	130	80	210
FSV 34F - GW 3/4"	601651	DN 20 - 3/4"	130	80	210
FSV 100F - GW 1"	601652	DN 25 - 1"	130	80	230
FSV 114F - GW 1 1/4"	601653	DN 32 - 1 1/4"	130	80	230
FSV 112F - GW 1 1/2"	601654	DN 40 - 1 1/2"	158	80	280
FSV 200F - GW 2"	601655	DN 50 - 2"	158	80	280
Manometr FSV400	601659				

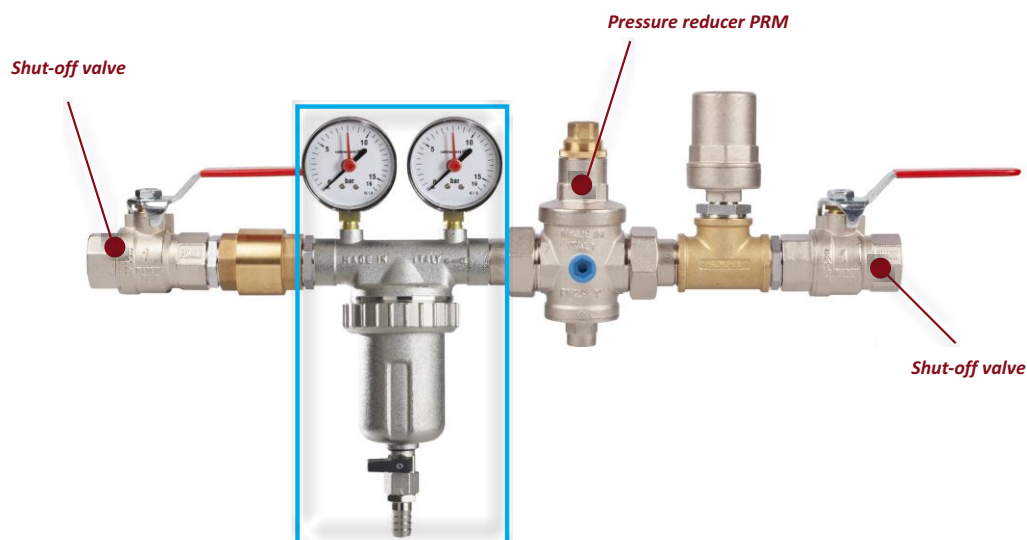
Dimensions



Installation



We suggest to install a shut-off valves before and after the filter, to allow possible interventions and the regular maintenance.



On the body are installed two pressure gauges: one for inlet pressure indication, the other one for outlet pressure. Therefore bigger the gap between the two pressures (outlet pressure lower than inlet pressure), how more the filter is clogged and needs a cleaning. In order to carry out the filter cleaning, you should open the ball valve under the cup for some seconds, so to drive out the impurities on the bottom. If the cartridge needs a more accurate cleaning, close the shut-off valves, screw-off the lock ring (par n.5), taking out the cartridge and proceed to clean with water or, replace it if necessary.