

## Magnetic dirt separator SM 20 - DN 20

Destiny:

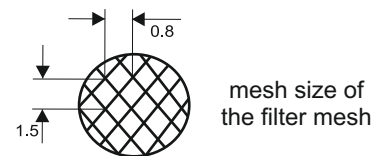
The separator is used to remove water contaminants in closed central heating systems, especially sand and rust particles. Contaminants in the circuit can accelerate the wear of the water pump, valves and other components of the heating system. Dirt can also block heat exchangers, radiator or pipe ends, reducing the efficiency of the entire system.

Due to its special design, the separator can be installed horizontally or vertically. It enables excellent filtration and deposition of pollutants in the filter tank. Removal of pollutants can occur during normal operation of the installation. The device can be mounted on vertical or horizontal pipelines.



### Technical data:

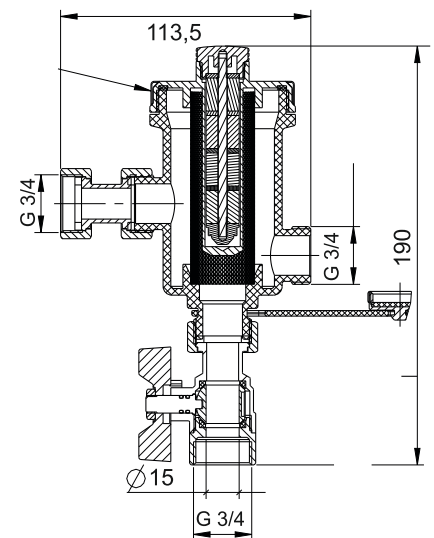
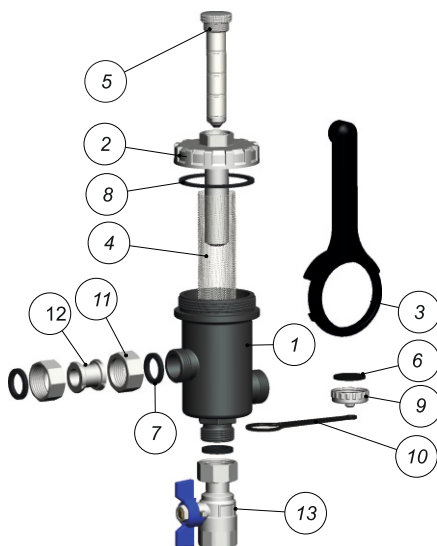
- body: glass fiber reinforced nylon
  - AISI 304 stainless steel filter mesh,
  - 9000G neodymium magnet,
  - medium: water,
  - temperature range (min-max) 0 ° C - 90 ° C,
  - max. inlet pressure - 4 bar,
  - max. flow 1.5 m<sup>3</sup> / h
  - connection: 3/4 "F x 3/4" F x 3/4 "F,
  - sealing: EPDM
- Installation: on vertical and horizontal pipelines.



Type	Catalog number
Magnetic dirt separator SM 20 - 3/4"	500035
Magnetic dirt separator SM 25 - 1"	500036

### Dimensions and construction:

1. Separator housing
2. Brass lid and magnet sleeve
3. The key
4. Stainless steel mesh filter
5. Neodymium magnet
- 6, 7, 8. Rubber gasket
9. Drain plug / breather
10. Pendant
11. Nut
12. Connector
13. Ball valve - connection to the system.



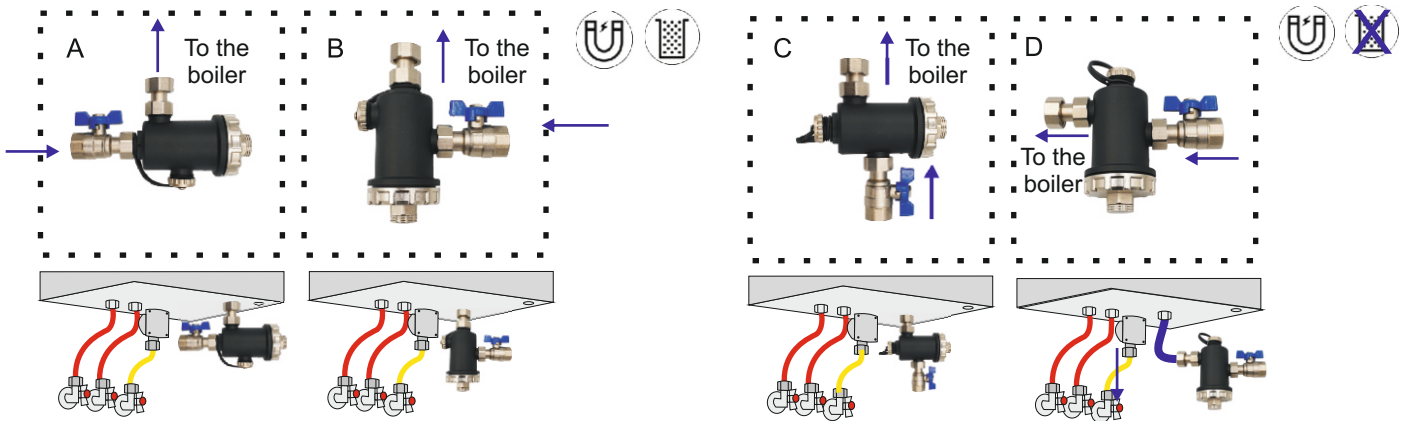
### Installation:

Due to the special structure of the T-shaped body, the separator can be installed horizontally or vertically. The dirt separator ensures perfect filtration. The filter can be cleaned during normal operation of the installation.

- The device should be installed in the boiler return
- For filter maintenance, use a 29 mm wrench (3) (to loosen the filter chamber);
- We perform the first routine cleaning one month after the first installation. Then you should carry out cleaning twice a year, with the heating system turned on.
- The cleaning intervals must be adapted to the specifications of the system.

## POSITIONS ASSEMBLY AND USE

\* The filter should be installed under the boiler on the water return.  
 Select the correct filter setting (reconstructed mounting position A and B).  
 Water connections 3/4



**IMPORTANT: Before checking, cleaning, or servicing devices turn off the boiler, close shut-off valves upstream of the separator debris and wait for all parts to cool.**

### Inspection, cleaning and maintenance

We clean the device as follows:

1. Turn off the boiler, close the filter valves and the valve on the boiler feed.
2. put the container under the filter. We wait for the water to cool down.
3. Unscrew the magnet and take it out from the filter socket. (Removal of the magnet allows any debris and magnetic deposits that will fall into the filter housing).
4. Then open the drain valve by turning its lever.
5. Wait a few seconds, then slightly open the shut-off valve to allow the flow to flow through washing water and rinsing out impurities.
6. Then close the shut-off valve again.
7. We wash the filter thoroughly, remove sediments and deposits.
8. Before reassembly, lubricate the O-rings with silicone grease.
9. After cleaning, put the filter back together
10. Place the magnetic insert in the socket, and screw it on. We open the top valve again.



**ALWAYS REMOVE THE MAGNET WHEN DISASSEMBLING OR REASSEMBLY OF REST COMPONENTS**