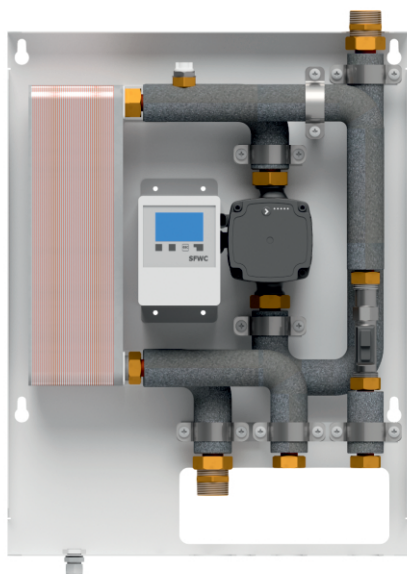


Domestic hot water preparation station WS 40

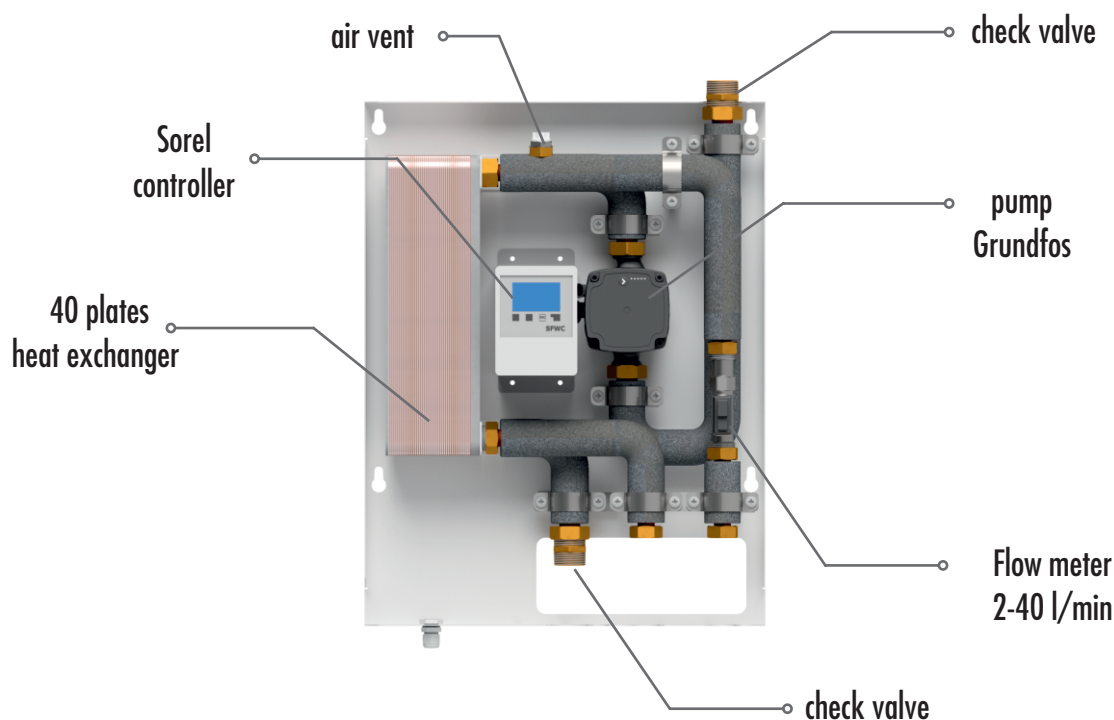


The domestic hot water (DHW) preparation station WS40 is a device used for efficient and fast heating of domestic water in residential and commercial buildings. It operates on the principle of flow water heating, thanks to which the water is heated directly at the moment of its use, which eliminates the need to store large amounts of hot water and reduces energy losses. The station is equipped with a heat exchanger, which allows for the efficient use of heat from various sources, such as gas boilers, heat pumps or solar installations. Thanks to advanced automation, DHW preparation stations can adjust their operation to the current demand for hot water, which allows for energy savings and increased user comfort. The system includes a steel closing cabinet.

Technical data:

Material:	copper, brass, stainless steel
Maximum operating pressure:	F1-F2 primary side 10 bar F3-F4 secondary side 16 bar
Flow capacity:	40 l/min
Number of exchanger plates:	40
Medium temperature:	max.: +95 °C min.: +2 °C

Type	Catalog number
Domestic hot water preparation station WS 40, with pump Grundfos UPM4S 15-60	606711



Connection diagram of the domestic hot water preparation station WS 40

