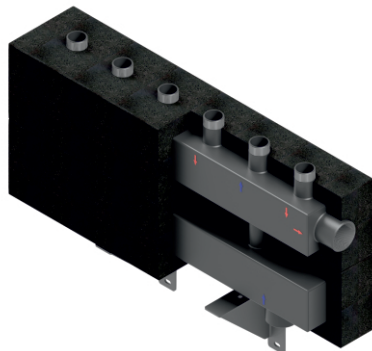


Cascade collector, for heating and cooling CH2 100 - DN 50

Cascade collector, for heating and cooling C 2 100 - DN 50 was created to connect heat pumps in a cascade. It is factory-equipped with tightly fitted EPP insulation and wall brackets. The collector can be used for heating and cooling.

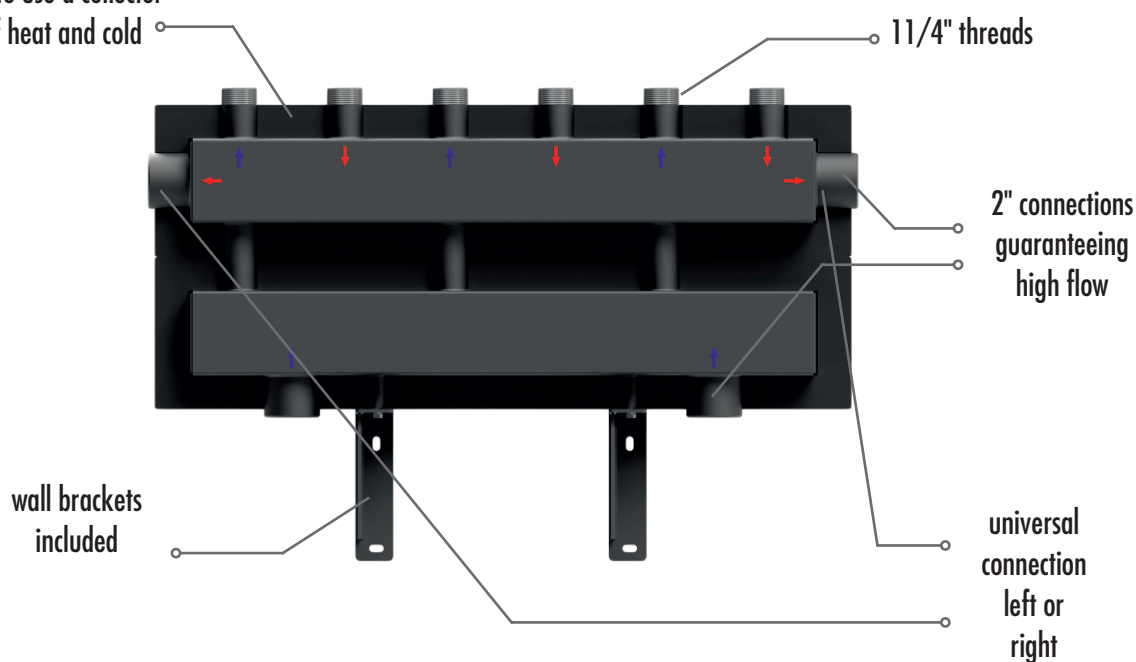


Technical data:

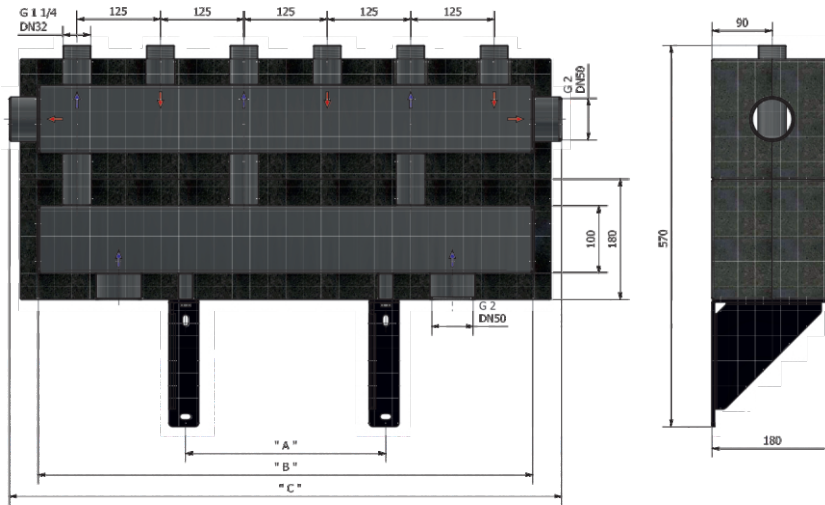
Material:	steel
Maximum pressure:	6 bar
Maximum temperature:	110°C
Axle spacing:	125 mm
Insulation:	EPP black
Connection:	
heat pump side:	1 1/4" M
installation side:	2" F

Type	Power at DT 5°C	Power at DT 10°C	Power at DT 20°C	Flow [m³/h]	Catalog number
Cascade collector, for heating and cooling CH2 100 2F - DN 50, 2 heat pumps	76,00	150,00	300,00	13,00	607141
Cascade collector, for heating and cooling CH2 100 3F - DN 50, 3 heat pumps	76,00	150,00	300,00	13,00	607142
Cascade collector, for heating and cooling CH2 100 4F - DN 50, 4 heat pumps	76,00	150,00	300,00	13,00	607143
Cascade collector, for heating and cooling CH2 100 5F - DN 50, 5 heat pumps	76,00	150,00	300,00	13,00	607144

thanks to tight insulation it is possible to use a collector for the distribution of heat and cold

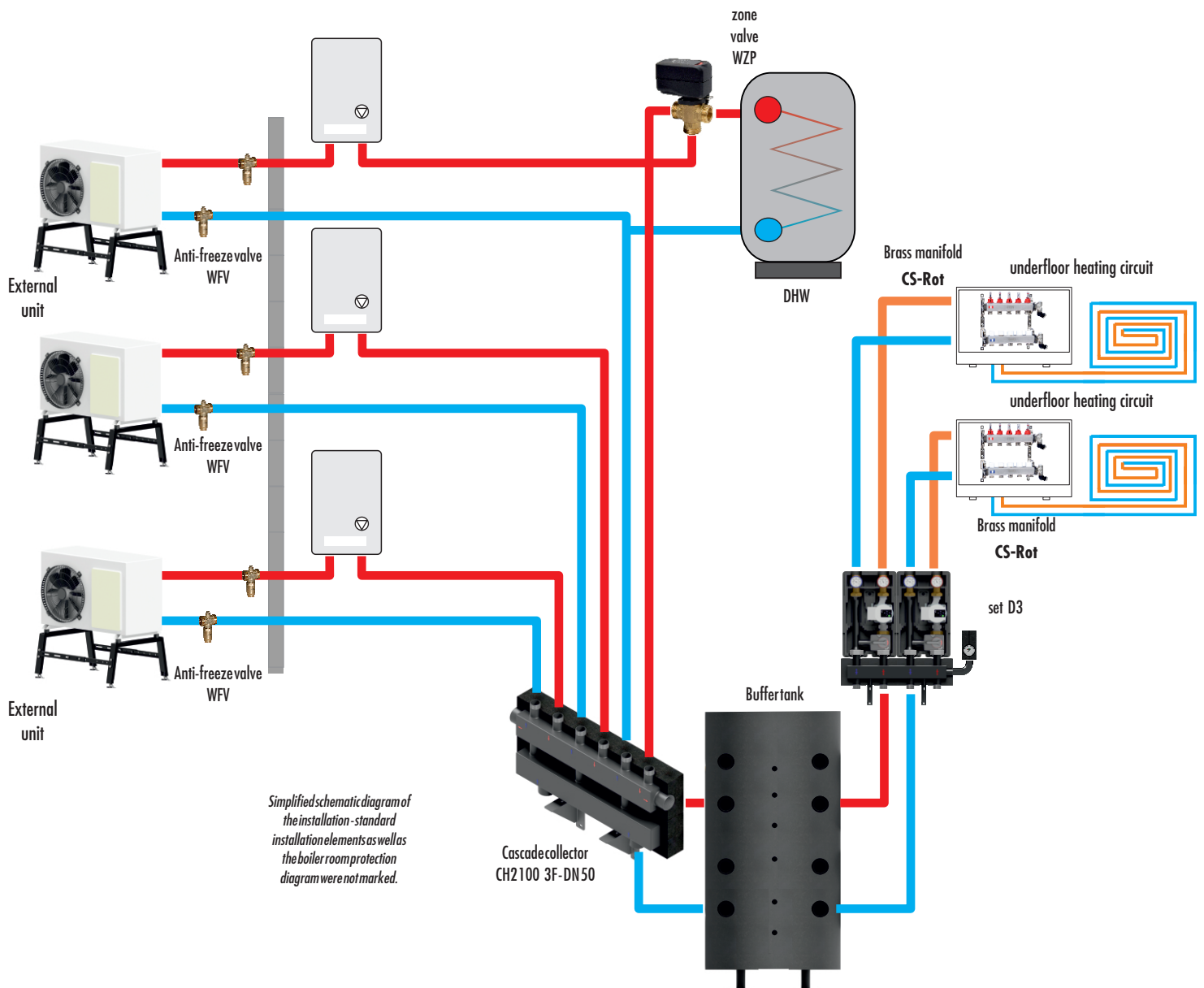


Dimensional diagram



Number of circuits	A	B	C
2	420	480	560
3	300	745	825
4	500	1010	1090
5	700	1275	1355

Application example cascade collector, for heating and cooling CH2 100 - DN 50



Simplified schematic diagram of the installation - standard installation elements as well as the boiler room protection diagram were not marked.