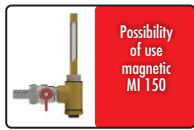
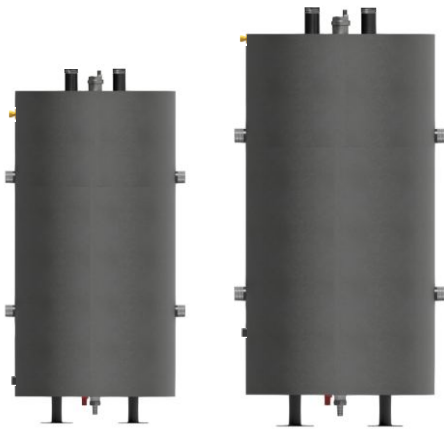


Multi-zone accumulation hydraulic separator MULTI-ZONER

Equipment:



Possibility of use magnetic MI 150



Wall brackets for mounting accumulation hydraulic separator on the wall (additional option)

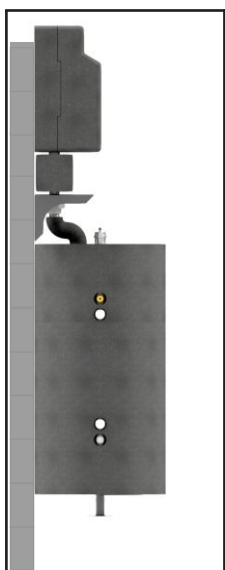
The multi-zone accumulation hydraulic separator MULTI-ZONER is made of steel. It works as a tank and a hydraulic separator with an output to the central heating system. Its task is to facilitate the operation of the heat pump in order to meet the heat demand with optimal modulation and to cover the peak loads with the support of an auxiliary heat source. Appropriate placement of connections and a partition ensures proper liquid stratification and maintaining an appropriate difference between the two temperature levels. The diameter and spacing of the connections allow direct connection of DN 25 pump groups in any configuration, making it possible to operate multiple heating circuits after using a C 60 or C 70 pump group zone manifold and connection of 2 heat sources. An additional sleeve allows the use of a magnetic insert MI 150 - DN 15. The product includes insulation, automatic air vent, immersion sleeve for the temperature sensor, drain valve and mounting feet.

Technical data:

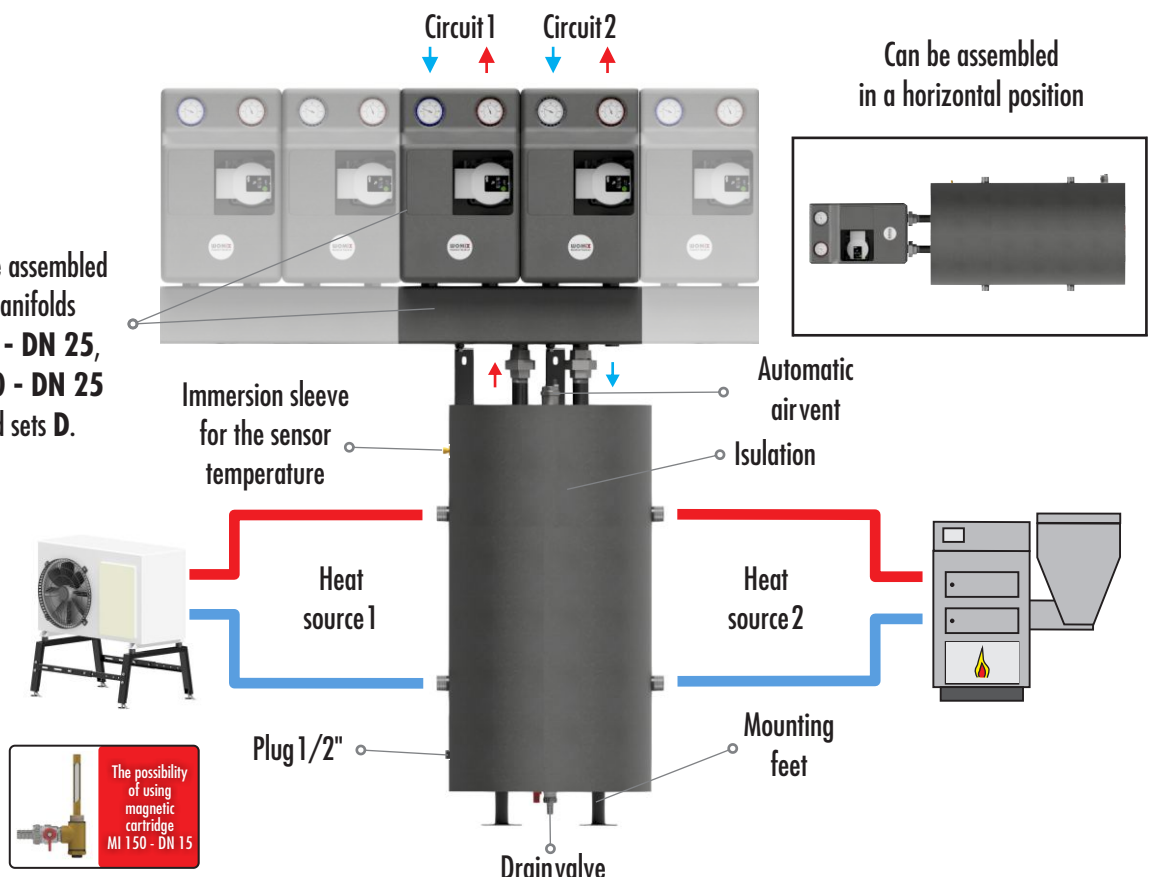
Total capacity:	45 L or 70 L (depending on the model)
Insulation:	EPP black 60 g/l
Maximum pressure:	6 bar
Maximum temperature:	95 °C
Connection diameter:	
heat source side:	1" M
heating circuits side:	1" M
Spacing of connections:	
heat source side:	350 mm
heating circuits side:	125 mm

Type	Capacity [l]	Catalog number
Multi-zone accumulation hydraulic separator MULTI-ZONER 45	45	606795
Multi-zone accumulation hydraulic separator MULTI-ZONER 70	70	606796
Wall brackets for mounting on the wall		606799
Magnetic cartridge MI 150 - DN 15		607255

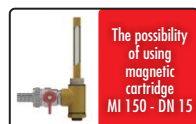
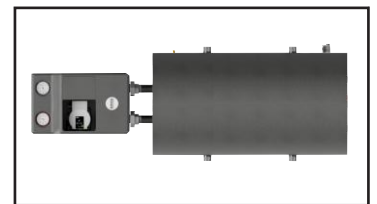
The system is designed to enable assembly pump groups on the wall



Can be assembled manifolds C 60 - DN 25, C 70 - DN 25 and sets D.



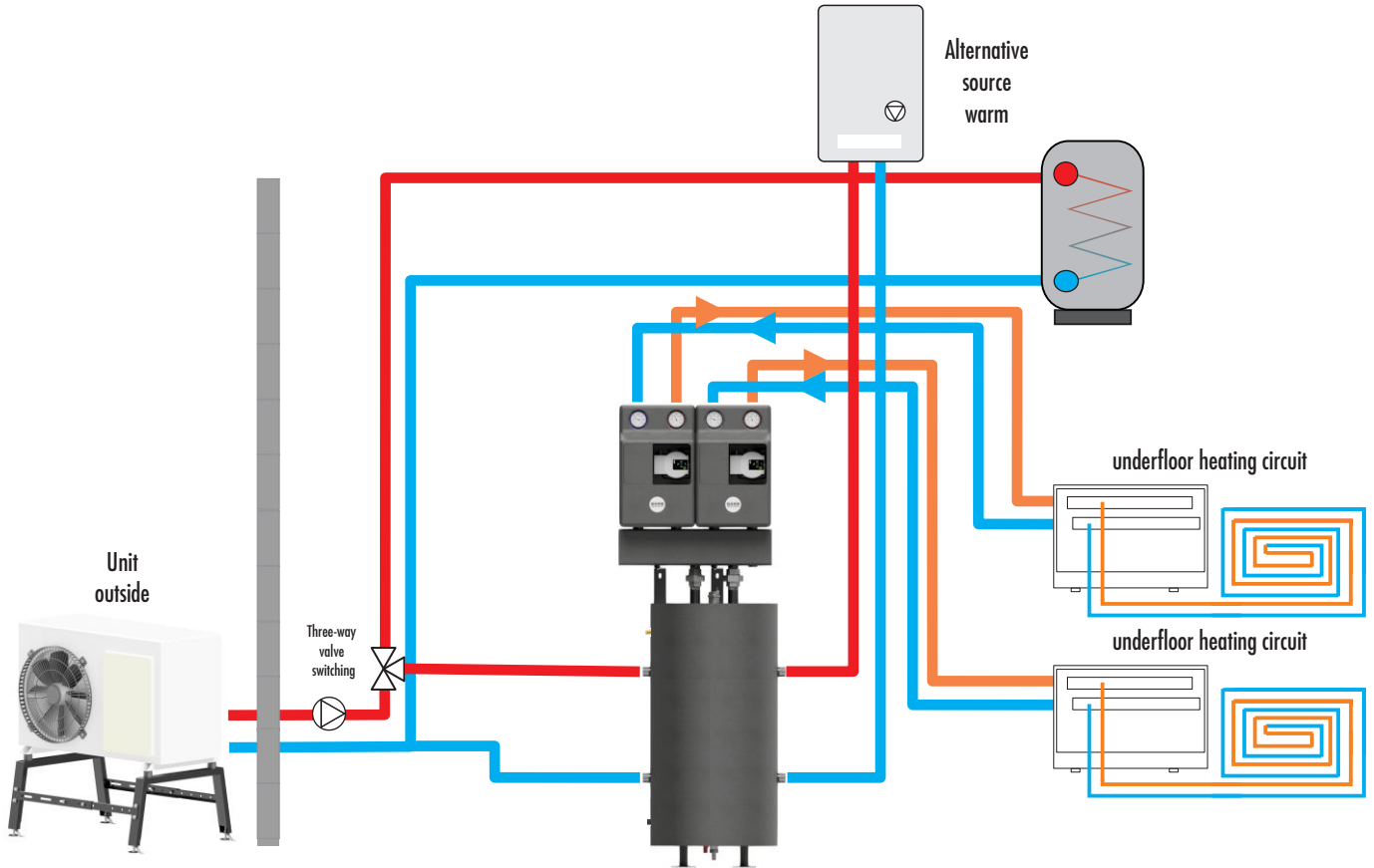
Can be assembled in a horizontal position



The possibility of using magnetic cartridge MI 150 - DN 15



Connection diagram multi-zone accumulation hydraulic separator MULTIZONER



Dimensional diagram multi-zone accumulation hydraulic separator MULTIZONER

