

Mixing valve
MIX M

red line



Mounting and operating instruction



WOMIX

Ul. Sportowa 31

89-200 Szubin

phone/fax +48 52 382 44 50 fax +48 52 382 44 51

www.womix.com.pl e-mail: biuro@womix.com.pl

Introduction

Thank you for your trust in our company and for purchasing energy-efficient mixing valve MIX M. from Recireland. This product will serve you for years and significantly influence the energy efficiency of heating.

Mixing valve MIX

Three-way mixing valve MIX M 3 is used in central heating systems. By valve we regulate the temperature of the water supply system. The required flow temperature of central heating is obtained by mixing: a warm (power from boiler) with a cold (return from system) medium. To protect the pump from running on the side 100% closing of the valve the only possible way installing the pump is a mixed medium side.

The advantage of the four-way mixing valve MIX M 4 is in addition to the temperature control of the supply system is also increasing the temperature of fluid returning to the boiler. A heating medium is mixed with the water returning from the system. With the rise in temperature by the return of the boiler is additionally protected against corrosion.

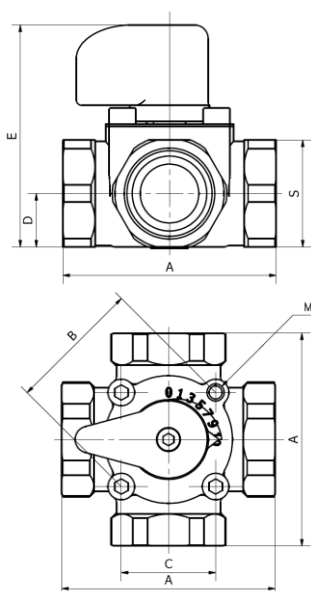
Technical data:

Max pressure:	10 bar
Max temp.:	110°C
Angle of rotation:	90°
Body, rotor and cap:	brass Ms CW617N
Scale:	Steel
Sealing cover:	NBR
Seal:	EPDM - two O-rings
Handle:	Plastic, red

Way to adjustment scale

The scale can be adjusted after having unscrewed the handle with an Allen wrench. Using the Allen wrench, unscrew the two screws M6. After unscrewing we can adjust the scale, then screw it back into the valve body. Changing the scale does not cause leaks of the valve.

Dimesions:



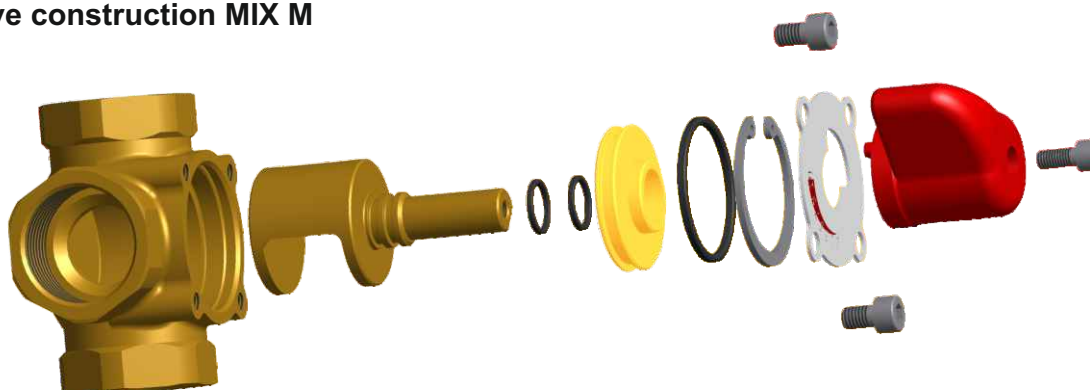
3-ways mixing valve

Type	Kv	Size	A	B	C	D	S	M	E	Cod.
MIX M 3 - 20	4	3/4"	74	50	35,4	18	32	6	80	601001
MIX M 3 - 20	6	3/4"	74	50	35,4	18	32	6	80	601002
MIX M 3 - 20	8	3/4"	74	50	35,4	18	32	6	80	601003
MIX M 3 - 25	8	1"	80	50	35,4	20	40	6	82	601004
MIX M 3 - 25	12	1"	80	50	35,4	20	40	6	82	601005
MIX M 3 - 32	12	1 1/4"	86	50	35,4	25	50	6	87	601006
MIX M 3 - 32	18	1 1/4"	86	50	35,4	25	50	6	87	601007
MIX M 3 - 40	28	1 1/2"	110	70	49,9	27	55	6	97	601008
MIX M 3 - 50	44	2"	120	70	49,5	27	70	6	107	601009

4-ways mixing valve

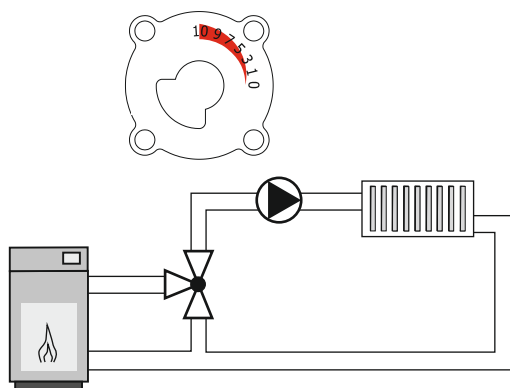
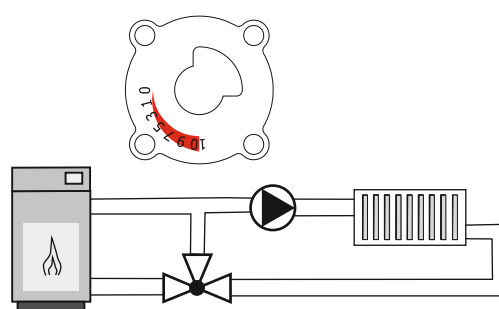
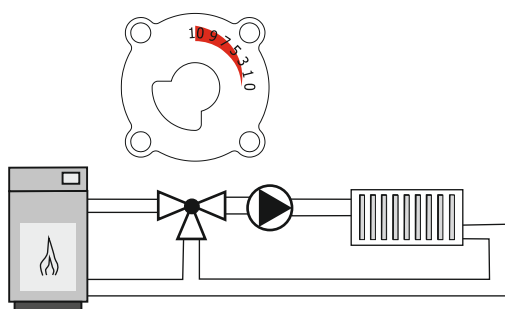
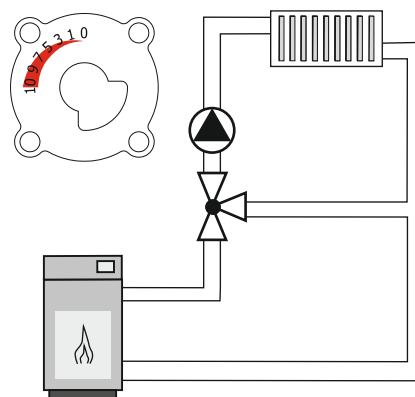
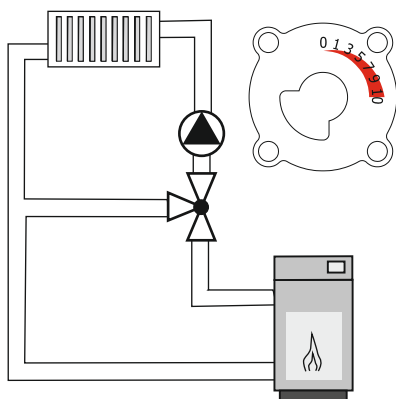
Type	Kv	Size	A	B	C	D	S	M	E	Cod.
MIX M 4 - 20	8	3/4"	74	50	35,4	18	32	6	80	602003
MIX M 4 - 25	8	1"	80	50	35,4	20	40	6	82	602004
MIX M 4 - 25	12	1"	80	50	35,4	20	40	6	82	602005
MIX M 4 - 32	12	1 1/4"	86	50	35,4	25	50	6	87	602006
MIX M 4 - 32	18	1 1/4"	86	50	35,4	25	50	6	87	602007
MIX M 4 - 40	28	1 1/2"	110	70	49,9	27	55	6	97	602008
MIX M 4 - 50	44	2"	120	70	49,5	27	70	6	107	602009

Valve construction MIX M



Examples of applications 3-ways mixing valve Diagrams and scale setting

Basic settings



View valve head

3-ways mixing valve

4-ways mixing valve



Examples of applications 4-ways mixing valve Diagrams and scale setting

Basic settings

